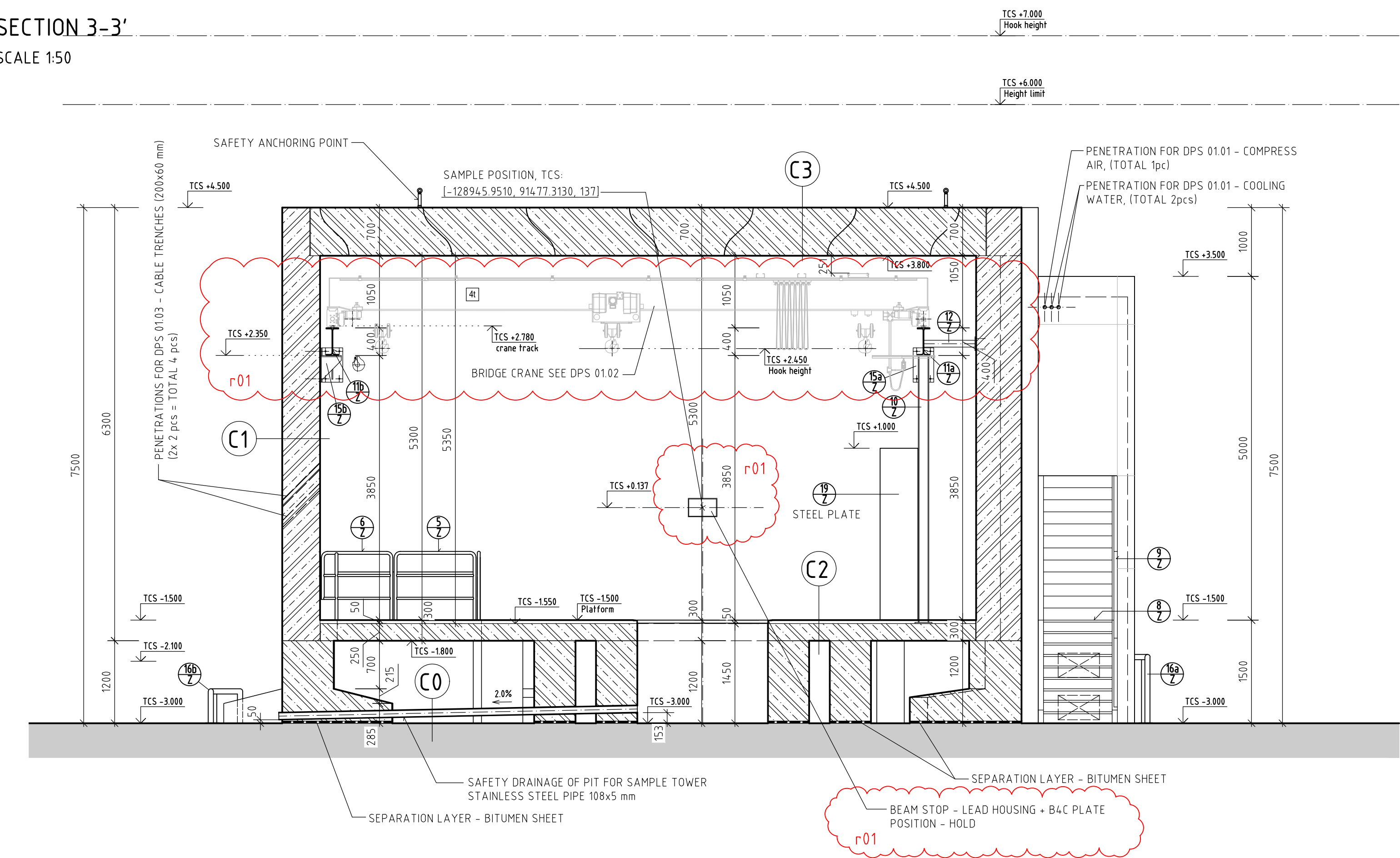
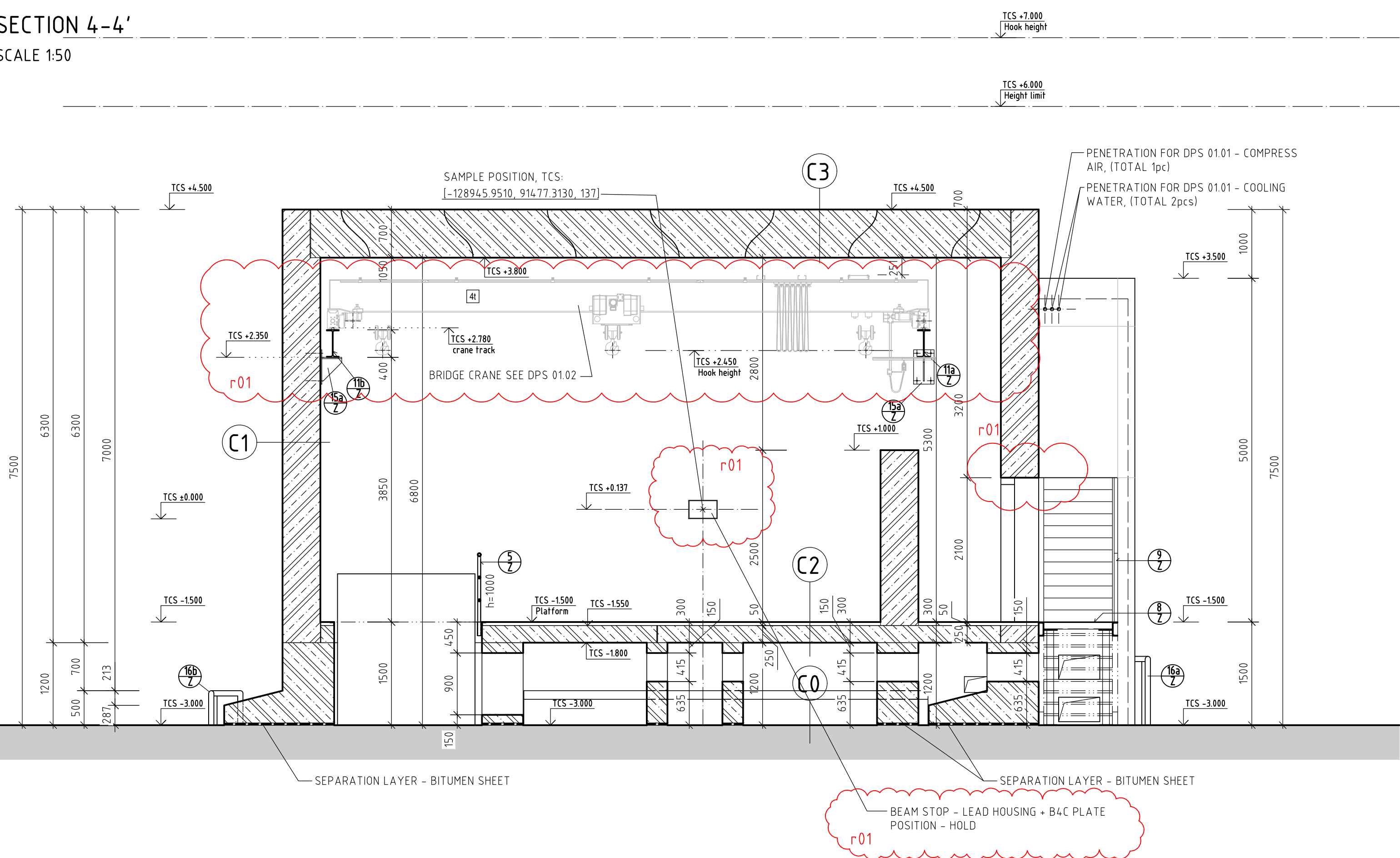


C0 101 - BEER EXPERIMENTAL CAVE AND CONTROL HUTCH AREA

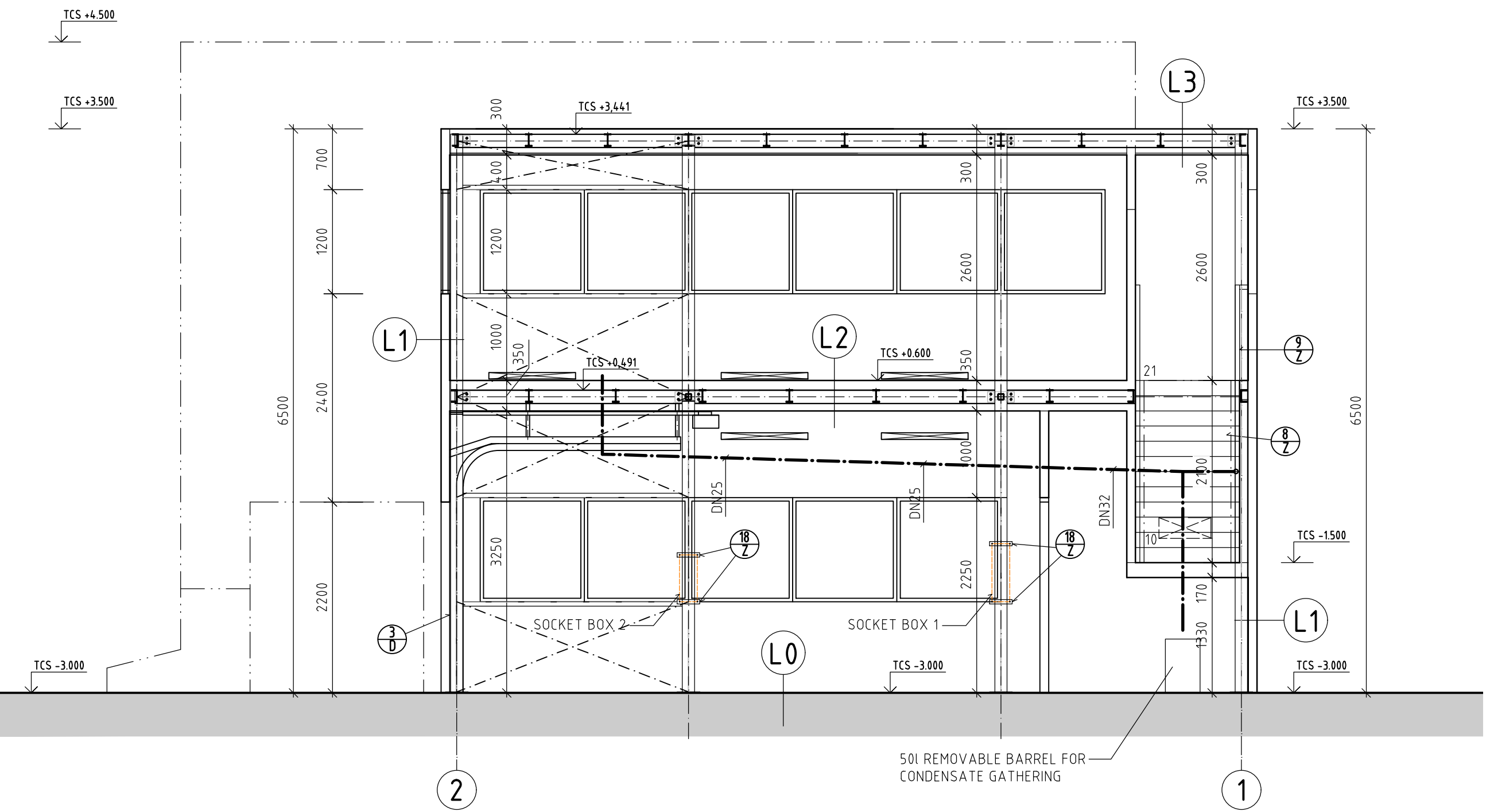
SECTION 3-3'
SCALE 1:50



SECTION 4-4'
SCALE 1:50



SECTION 5-5'
SCALE 1:50



LIST OF STRUCTURE COMPOSITIONS
SCALE 1:50

L0	CONTROL HUTCH - SAMPLE PREPARATION AREA FLOOR		
	- FINISH COATING - EPOXY LAYER (RAL 7004 - SIGNAL GRAY),	TH. 3,0 mm	
	- EXISTING REINFORCED CONCRETE SLAB OF EXPERIMENTAL HALL 3 (E01)	TH. 500 mm	
L1	CONTROL HUTCH - PERIPHERAL WALLS		
	- OUTER CLADDING - PLASTERBOARD WITH VINIL FOIL DURAFORT,	TH. 12,5 mm	
	- ACOUSTIC INSULATION - MINERAL WOOL (MW) BOARD, THIN-WALLED PROFILES,	TH. 60 mm	
	- INSIDE CLADDING - PLASTERBOARD WITH VINIL FOIL DURAFORT,	TH. 12,5 mm	
L2	CONTROL HUTCH - CEILING + FLOOR ABOVE MECHANICAL WORKSHOP ROOM		
	- TREAD LAYER OF FLOOR - PVC,	TH. 3,0 mm	
	- BEARING LAYER - 2x OSB 3N BOARD,	TH. 2x15 mm	
	- IMPACT (ACOUSTIC) INSULATION - MINERAL WOOL (MW) BOARD,	TH. 20 mm	
	- BEARING LAYER - DTD BOARD (CHIPBOARD PLATE),	TH. 16 mm	
	- BEARING LAYER - TRAPEZOIDAL SHEET,	H. 4,0 mm	
	- EMPTY SPACE IN THE LEVEL OF CEILING BEAMS I No.14,0,	TH. 14,0 mm	
	- INSTALLATION SPACE - HANGING CEILING ELEMENTS,	TH. 86 mm	
	- CASSETTE CEILING IN RASTER (600/600 mm) - BEARING PROFILES,	TH. 15 mm	
	- MINERAL CEILING SLABS,		
L3	CONTROL HUTCH - CEILING ABOVE CONTROL ROOM PART		
	- BEARING LAYER - DTD BOARD (CHIPBOARD PLATE),	TH. 16 mm	
	- BEARING LAYER - TRAPEZOIDAL SHEET,	H. 4,0 mm	
	- EMPTY SPACE IN THE LEVEL OF CEILING BEAMS I No.14,0,	TH. 14,0 mm	
	- INSTALLATION SPACE - HANGING CEILING ELEMENTS,	TH. 86 mm	
	- CASSETTE CEILING IN RASTER (600/600 mm) - BEARING PROFILES,	TH. 15 mm	
	- MINERAL CEILING SLABS,		
C0	EXPERIMENTAL CAVE - FLOOR LEVEL -3,000 m		
	- FINISH COATING - EPOXY LAYER (RAL 7004 - SIGNAL GRAY),	TH. 3,0 mm	
	- EXISTING REINFORCED CONCRETE SLAB OF EXPERIMENTAL HALL 3 (E01)	TH. 500 mm	
C1	EXPERIMENTAL CAVE - PERIPHERAL SHIELDING WALL		
	- OUTER FINISH COATING - EPOXY COATING SYSTEM, ONE LAYER EXTERIOR	TH. 2,0 mm	
	- COATING (RAL 1028 - YELLOW),	TH. 550/650 mm	
	- PRE-CAST REINFORCED CONCRETE WALL PANELS OF HEAVY CONCRETE (3850 kg/m3),	TH. 8 mm	
	- TILES WITH B4C, GLUED BY MS POLYMER MASTIC,	TH. 2 mm	
	- FINAL EPOXY LAYER PROVIDING COLOR SHADE (RAL 7004 - SIGNAL GRAY),		
C2	EXPERIMENTAL CAVE - PLATFORM SLAB - FLOOR COMPOSITION (LEVEL -1,500 m)		
	- FINAL EPOXY LAYER PROVIDING FLATNESS AND COLOR SHADE	TH. 3,0 mm	
	- (RAL 7004 - SIGNAL GRAY),	TH. 8,0 mm	
	- TILES WITH B4C, IN FULL FLOOR AREA GLUED,	TH. 8,0 mm	
	- LEVELING LAYER (IF NEEDED) - SELF-LEVELING SCREED ON CEMENT BASIS,	TH. 3,0 mm	
	- CONCRETE SCREED (30 MPa), DIVIDED IN PLATFORM SLABS DIMENSIONS RASTER		
	- (BY SEPARATING INSERT),	TH. 36 mm	
	- PRE-CAST REINFORCED CONCRETE PLATFORM SLAB OF		
	- ORDINARY CONCRETE (2300 kg/m3),	TH. 250 mm	
C3	EXPERIMENTAL CAVE - ROOF SLAB		
	- OUTER FINISH COATING - EPOXY COATING SYSTEM, ONE LAYER EXTERIOR	TH. 2,0 mm	
	- COATING (RAL 1028 - YELLOW),	TH. 700 mm	
	- PRE-CAST REINFORCED CONCRETE CEILING PANELS OF	TH. 8 mm	
	- ORDINARY CONCRETE (2300 kg/m3),	TH. 2 mm	
	- TILES WITH B4C, GLUED BY MS POLYMER MASTIC,		
	- FINAL EPOXY LAYER PROVIDING COLOR SHADE (RAL 7004 - SIGNAL GRAY),		

LEGEND OF CONSTRUCTIONS

	PRE-CAST REINFORCED CONCRETE CONSTRUCTION PARTS OF ORDINARY CONCRETE (2300 kg/m3)
	PRE-CAST REINFORCED CONCRETE CONSTRUCTION PARTS OF HEAVY CONCRETE (3850 kg/m3)
	REINFORCED CONCRETE EXISTING STRUCTURES
	ASSEMBLED CELL WALL OF TWO FLOOR BUILT-IN CELL, TH. 100 mm

LEGEND OF CONSTRUCTIONS

	CONDENSATE OUTLET PIPING, PPR, PN10 (PN16)
--	--

NOTE

- TCS - TARGET COORDINATE SYSTEM
- TECHNICAL DESCRIPTION IS DETAILY MENTIONED IN TECHNICAL REPORT (ARCH. NO. 5043-F-180584).
- LIST OF STRUCTURE COMPOSITIONS SEE DRAWING NO. 009 OR 010 SECTIONS (ARCH. NO. 5043-D-181789 AND 5043-D-181790).
- PRECISE SHAPES, ANCHORING, MUTUAL CONNECTIONS AND PENETRATIONS THROUGH THE INDIVIDUAL PRE-CAST PARTS WILL BE PART OF THE PRE-PRODUCTION DOCUMENTATION AND WORKING DRAWINGS PROVIDED BY CONTRACTOR/SUPPLIER OF THE PRE-CAST STRUCTURE.
- SYSTEM OF CONNECTION OF THE PRE-CAST PARTS IS DESCRIBED IN TECHNICAL REPORT OF CIVIL PART - DOCUMENT NO. 5043-F-180584 (ESS-0461627), CHAPTER 5.1.4 - CONNECTIONS OF PRE-CAST PARTS.
- THE REQUIREMENT TO ENSURE THE RIGID CONNECTION OF THE INDIVIDUAL PRE-CAST PARTS OF THE EXPERIMENTAL CAVE STRUCTURE MUST ALSO BE TAKEN INTO ACCOUNT BY CONTRACTOR/SUPPLIER OF THE PRE-CAST STRUCTURE IN ITS PRE-PRODUCTION DOCUMENTATION AND ITS WORKING DRAWINGS.

		NUVIA a.s. Modřínova 1094, 674 01 Třebíč, Česká republika		Document number ESS-0461615 Project number ME0426				Released	
		NUVIA a.s. Divizeň ENERGOPROJEKT PRAHA		Workplace Na Zertvách 2247/29, 180 00 Praha 8 Managing Department 2505		Processing Department 2503		Cancellation sym V10	
Construction-action ESS - BEER		Object - operation unit C0 101		Serial number 010		Degree of prot 010		Copy no	
Drawing title Documentation for diffractometer BEER DETAIL DESIGN, Part B - Civil part		C0 101 - BEER EXPERIMENTAL CAVE AND CONTROL HUTCH AREA SECTIONS 3-3', 4-4', 5-5'		Prepared by Filip Duřek		Head of processing department Ivan Holub		Date 04/2020	
Checked by Zdeněk Vaněček		Main project engineer Jiří Petrů		File 010_DD_Sect_A_r01.DWG		Size A 2 / 8x A4		Scale 1:50	
Job number 27-5356-30-001		Archive number EGP 5043-D-181790		Index B		Sheet			